



collegebatch.com

click to campus

TANCET 2022 Question Paper for MCA

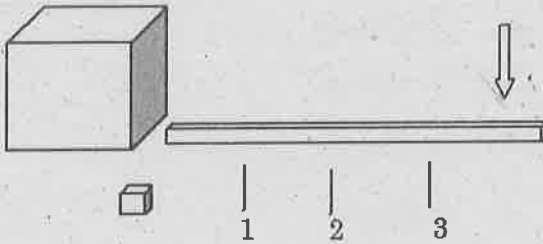
Tamil Nadu Common Entrance Test

Download more TANCET Previous Year Question Papers: [Click Here](#)

## MCR 22

1. Which is the odd one out?
  - a. Fashion
  - b. Dress
  - c. Trend
  - d. Vogue
2. What word below continues the sequence ARC, AIL, ARM, SOB, AIR, ?
  - a. CAT
  - b. ASS
  - c. COB
  - d. PIG
3. What month come next January, February, April, July, November, April, October, ?
  - a. December
  - b. November
  - c. May
  - d. March
4. Harry is third again as old as Dick, who is a third as old again as Tom. Their combined ages total 148. How old are the three men.
  - a. Tom 36, Dick 48, Harry 64
  - b. Tom 16, Dick 68, Harry 64
  - c. Tom 26, Dick 58, Harry 54
  - d. Tom 36, Dick 78, Harry 34
5. What comes next: Semi-circle, square, hexagon, ?
  - a. Rectangle
  - b. Pentagon
  - c. Triangle
  - d. Octagon
6. A train is travelling at a speed of 80 mph enters a tunnel that is 0.75 miles long. The length of the train to pass through the tunnel is 0.25 miles. How long does it take for all of the train to pass through the tunnel, from the moment the train enters to the moment the rear emerges?
  - a. 30 sec
  - b. 20 sec
  - c. 45 sec
  - d. 50 sec
7. A Shatabdi railway links Mumbai and Nashik, which are 128 miles apart. A train leaves Mumbai travelling at 75 mph. Another train leaves Nashik at exactly same time travelling at 85 mph. Both trains are non-stop. Which train will be the farthest from Mumbai when they meet?
  - a. Train leaving from Mumbai
  - b. Train leaving from Nashik
  - c. Both are equidistance
  - d. None of the above

8. To lever up the large, heavy weight with the least effort, by pushing down in the direction of the arrow, at which point under the beam should the block be placed?



- a. 1  
b. 2  
c. 3  
d. Makes no difference

9. What is indicated below?

The first of October

A fifth of scotch

The tail of a rattlesnake

The centre of a hexagon

The end of autumn

- a. Fragment  
b. Ocean  
c. Season  
d. Pyramid
10. Which one the words is the odd one out?
- a. FURNISHED  
b. NUTSHELL  
c. USHERETTE  
d. REFERSHING

11. Which of these anagrams is not a fruit?

- a. NIQUEU  
b. CHYEEL  
c. NAGORE  
d. DINGOI

12. A formula is a set formed of words or symbols in which something is

- a. Recommended  
b. Defined  
c. Used  
d. Concealed

13. Which word is the odd one out?

- a. Drop  
b. Hasten  
c. Surge  
d. Spring

14. What number should replace the question mark?

3	6	2	8
2	1	1	3
1	3	1	4
5	1	3	?

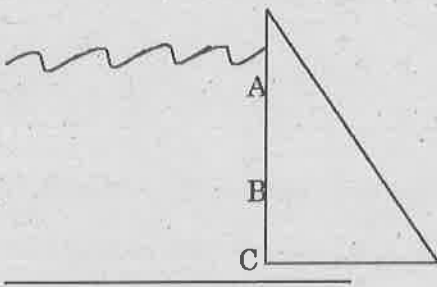
- a. 8  
b. 2  
c. 1  
d. 3

15. Which ball is the heaviest?



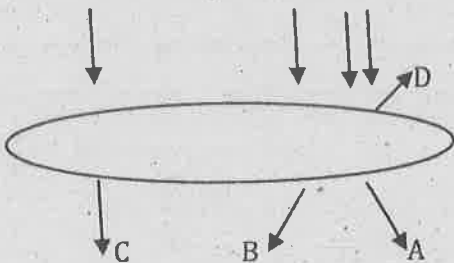
- a. All weigh the same
- b. L is heaviest
- c. Cannot say
- d. J is the heaviest

16. A section of dam is shown. At which point the water is coldest



- a. At point A
- b. At point B
- c. At point C
- d. All equally

17. When rays of light hit a lens, in which direction do they continue?



- a. A
- b. B
- c. C
- d. D

18. Herd is to giraffes as exaltation is to

- a. Bees
- b. Ducks
- c. Larks
- d. Pigeons

19. What is gynephobia the fear of?

- a. Pain
- b. Strangers
- c. Women
- d. Poverty

20. What letter replace the question mark?



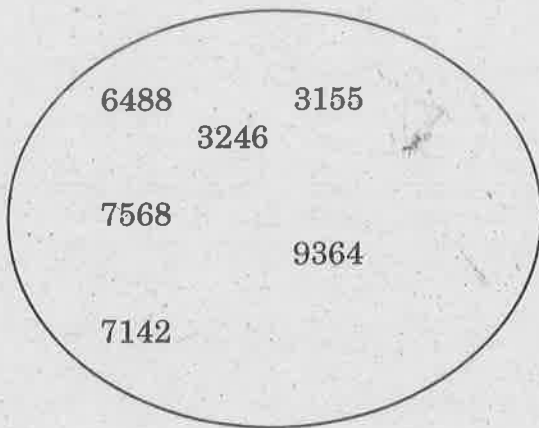
- a. G
- b. E
- c. L
- d. I

21. What number should replace the question mark?

6.72, 6.10, 6.66, 6.16, 6.60, 6.22, 6.54, ?

- a. 6.18
- b. 6.34
- c. 6.28
- d. 6.77

22. Which number is the odd one out?



- a. 3246
- b. 6488
- c. 9364
- d. 7142

23. Which word comes next: arch, edgy, ?

- a. Pang
- b. Inky
- c. Lode
- d. Acid

24. The next pair in the series 6:20, 30:7, 23:3, 22:2,

- a. 6:1
- b. 1:44
- c. 5:11
- d. 3.33

25. Sally, Cheryl, Laura, Tom and Sandy travel extensively on business. Four of them have visas for China. All apart from Cheryl and Tom, have visas for Russia. Cheryl only has visa for Pakistan, although only Sally and Sandy do not have visa for Pakistan. Who only has visa for China and Pakistan?

- a. Sally
- b. Cheryl
- c. Tom
- d. Laura

26. The greatest possible length which can be used to measure exactly the lengths 4 m 95 cm, 9 m and 16 m 65 cm is:

- a. 15 cm
- b. 25 cm
- c. 35 cm
- d. 45 cm

27. An electronic device makes a beep after 60 sec. Another device makes a beep after 62 sec. They beeped together at 10 am. At what time they will make next beep together at the earliest?

- a. 10:30 am
- b. 10:31 am
- c. 10:59 am
- d. 11 am



28. The greatest number which exactly divides 105, 1001 and 2436 is :
- 3
  - 7
  - 11
  - 21
29. When  $n$  is divided by 4, the remainder is 3. What is the remainder when  $2n$  is divided by 4?
- 1
  - 2
  - 3
  - 6
30. What least value must be assigned to \* so that  $86325*6$  is divisible by 11?
- 1
  - 2
  - 3
  - 5
31.  $\left[ (0.6)^4 - (0.5)^4 \right] / \left[ (0.6)^2 - (0.5)^2 \right]$  is equal to:
- 1.1
  - 0.1
  - 11
  - 0.11
32. If  $1.5x = 0.04y$ , then the value of  $\frac{y-x}{y+x}$  is:
- $\frac{730}{77}$
  - $\frac{73}{77}$
  - $\frac{7.3}{77}$
  - None of the above
33. If  $\frac{x}{y} = \frac{4}{5}$ , the value of  $\left( \frac{5}{8} + \frac{y-x}{y+x} \right)$  is
- $\frac{49}{72}$
  - $\frac{53}{72}$
  - $\frac{23}{72}$
  - None of the above
34. In an examination, a student scores 4 marks for every correct answer and loses 1 mark for every wrong answer. If he attempts all 75 questions and secures 125 marks, the number of questions he attempts correctly is:
- 35
  - 40
  - 42
  - 46

35. If  $\frac{a}{3} = \frac{b}{4} = \frac{c}{7}$ , the value of  $\frac{a+b+c}{c}$  is:

- a. 7
- b. 2
- c.  $\frac{1}{2}$
- d.  $\frac{1}{7}$

36. Which one of the following numbers has rational square root?

- a. 0.4
- b. 0.09
- c. 0.9
- d. 0.025

37. What is the smallest number by which 3600 be divided to make it a perfect cube?

- a. 9
- b. 50
- c. 300
- d. 450

38. Five years ago, the average age of P and Q was 15 years. Average age of P, Q and R today is 20 years. How old will R be after 10 years?

- a. 35 years
- b. 40 years
- c. 30 years
- d. 50 years

39. A number 243 is divided into three parts such that half of the first part, one-third of the second part and one-fourth of the third part are equal. The largest part is :

- a. 74
- b. 86
- c. 92
- d. 108

40. The sum of seven numbers is 235. The average of the first three is 23 and that of the last three is 42. The fourth number is:

- a. 40
- b. 69
- c. 126
- d. 195

41. One year ago, a father was four times as old as his son. In 6 years time, his age exceeds twice his sons' age by 9 years. The ratio of their present ages is:

- a. 9 : 2
- b. 11 : 3
- c. 12 : 5
- d. 13 : 4

42. If  $2^{x+4} - 2^{x+2} = 3$ , then  $x$  is equal to :

- a. 0
- b. 2
- c. -1
- d. -2

43. P is six times as large as Q. The percent that Q is less than P, is:
- $83\frac{1}{3}$
  - $16\frac{2}{3}$
  - 90
  - 60
44. A cricket team won 40% of the total number of matches it played during a year. If it lost 50% of the matches played and 20% matches were drawn, the total number of matches played by the team during the year was:
- 200
  - 100
  - 50
  - 40
45. The retail price of a product is Rs. 1265. If the manufacturer gains 10%, the wholesale dealer 15% and the retailer 25%, then the cost of the production of the product was:
- Rs. 632.50
  - Rs. 800
  - Rs. 814
  - Rs. 834.34
46. An article is sold at a certain price. By selling it at  $\frac{2}{3}$  of that price one loses 10%. The gain percent at original price is:
- 20%
  - $33\frac{1}{3}\%$
  - 35%
  - 40%
47. Three different containers contain 496 litres, 403 litres and 713 litres of mixtures of milk and water respectively. What biggest measure can measure all the different quantities exactly?
- 1 litre
  - 7 litres
  - 31 litres
  - 41 litres
48. A wheel rotates 10 times every minute and moves 20 cm during each rotation. How many cms does the wheel move in 1 hour?
- 2000
  - 600
  - 1200
  - 12000



49. Machines A and B produce 8000 clips in 4 and 6 hours respectively. If they work alternatively for 1 hour, A starting first, then 8000 clips will be produced in :
- $4\frac{1}{3}$  hours
  - $4\frac{2}{3}$  hours
  - $5\frac{1}{3}$  hours
  - $5\frac{2}{3}$  hours
50. The length and breadth of a square are increased by 40% and 30% respectively. The area of the resulting rectangle exceeds the area of the square by :
- 35%
  - 42%
  - 62%
  - 82%
51. What is the purpose of a Firewall?
- To provide secure off-site data storage for a computer or network
  - To provide a computer or network with wireless access to the Internet
  - To protect a computer or network against unauthorized intrusion
  - To delete temporary Internet files and cookies from a computer or network
52. Which one of the following is characteristics of an operating system?
- Resource management
  - Error recovery
  - Memory management
  - All the above
53. Which one of the following is a utility software?
- Word Processor
  - Anti Virus
  - Compiler
  - Desktop publishing tools
54. The process of accessing data stored in a tape is similar to manipulating data on a
- Stack
  - Queue
  - Heap
  - List
55. The time that a device takes to locate data and instructions and make them available to CPU is known as :
- Clock Speed
  - CPU Speed
  - Access Time
  - Process in cycle
56. Database query languages belongs to
- 4GL
  - 3GL
  - 2GL
  - None of the above

57. What is the binary equivalent of 2BC4?
- 0010101111000100
  - 0010110011000100
  - 0010110011000101
  - 0010101111010100
58. GIF stands for:
- Graphic Interface Function
  - Graphic Interchange Formula
  - Graphic Interchange Format
  - None of the above
59. Find the hexadecimal equivalent of octal number 463:
- 233
  - 463
  - 133
  - None of the above
60. XML stands for:
- Enlarged Markup Language
  - Extensible Markup Language
  - Enumerated Markup Language
  - Enhanced Markup Language
61. In C language Auto, static, register and extern are:
- Delimiters
  - Operators
  - Functions
  - Storage classes
62. Ethernet is :
- An electronic reading device
  - An operating system
  - Used to connect computers in Local Area network
  - Used for Temporary Storage
63. Which of the following protocol is used in E-mail Servers?
- FTP
  - SMTP
  - SNMP
  - TCP
64. Which OSI layer is responsible for encryption/decryption process?
- Network
  - Presentation
  - Session
  - Application
65. Which of the following command is used in Linux environment to remove the directories recursively?
- rdir -r
  - rmdir
  - rm -r
  - remove dir

66. With regard to NAND gate, which of the following statements are true:

1. It is equivalent to an AND gate followed by an inverter.
2. If all the inputs are low, the output is low
3. If all the inputs are high, the output is low
4. NAND on two operations is equivalent to OR operation.

Of these, the correct statements are:

- a. 1,2,3
- b. 1,3
- c. 1
- d. 2,3

67. Which of the following is considered as one billion bytes approximately?

- a. Kilobyte
- b. Bit
- c. Megabyte
- d. Gigabyte

68. Every column in a database is represented through a

- a. Field Marker
- b. Structure
- c. Field Name
- d. None of the above

69. Computer viruses, worms and Trojan horses with malicious intent is known as:

- a. Spyware
- b. Spam
- c. Logic bomb
- d. Malware

70. \_\_\_\_\_ is used by large retailers to study the marketing trends of business.

- a. Data Selection
- b. Data Mining
- c. Data Warehouse
- d. POS

71. What does the acronym ISDN stands for?

- a. Indian Standard Digital Network
- b. Intelligent Services Digital Network
- c. Integrated Services Digital Network
- d. Integrated Services Data Network

72. \_\_\_\_\_ is a combinatorial circuit that converts binary information from  $n$  input lines to a maximum of  $2^n$  output lines.

- a. Binary Decoder
- b. Binary Encoder
- c. Multiplexer
- d. None of the above

73. The register which holds the address of the location to which the data are to be transferred is known as:
- Instruction register
  - Memory Address Register
  - Memory Data Register
  - Memory Byte Register
74. Coded entries which are used to gain access to a computer system are called:
- Entry Codes
  - Security Commands
  - Passwords
  - Code Words
75. The method which offers higher speed of I/O transfers is:
- Interrupts
  - Memory Mapping
  - Program – Controlled I/O
  - DMA
76. \_\_\_\_\_ bus structure is used in general to connect I/O devices
- Single
  - Multiple
  - Star
  - Linear
77. What technology is used to hide an information inside a picture?
- Bitmapping
  - Steganography
  - Image Rendering
  - All the above
78. Direction for Question: In this question, if the letters of the given word EVOLUTION are used as many times as one wants to use, then which one of the four given words (a), (b), (c) and (d) cannot be formed?
- VOLT
  - VALE
  - TOOL
  - LOOT
79. Direction for Question: In this question, if the letters of the given word RAVENOUS are used as many times as one wants to use, then which one of the four given words (a), (b), (c) and (d) cannot be formed?
- NEVER
  - VENEER
  - ROVER
  - RIVER



80. Direction for Question: In this question, if the letters of the given word FALLACIOUS are used as many times as one wants to use, then which one of the four given words (a), (b), (c) and (d) cannot be formed?

- a. FALLS
- b. FAILS
- c. FILLS
- d. FILES

81. Direction for Question: In this question, if the letters of the given word ELEMENTARY are used as many times as one wants to use, then which one of the four given words (a), (b), (c) and (d) cannot be formed?

- a. TERMER
- b. MEANLY
- c. LUMEN
- d. LAMENT

82. If it is possible to form a number with the second, the fifth and the eighth digits of the number 3 1 5 4 9 7 8 6, which is the perfect square of a two-digit even number, which of the following will be the second digit of the even number?

- a. 2
- b. 4
- c. 6
- d. No such number can be formed

83. If Rita finds that she is twelfth from the right in the line of girls and fourth from the left, then how many girls should be added to the line, then such that there are 28 girls in the line?

- a. 12
- b. 13
- c. 14
- d. 20

84. Choose the odd one out.

- a. Pigeon
- b. Crow
- c. Parrot
- d. Kiwi

85. Choose the odd one out.

- a. Fog
- b. Smoke
- c. Rain
- d. Mist

86. Five bells begin to toll together and toll respectively at intervals of 5, 6, 7, 10 and 2 seconds. How many times will they toll together in one hour excluding the one at the start?

- a. 7
- b. 8
- c. 9
- d. 11



87. If SPIDER is written as PSDIRE in a certain code, how would COMMON be written in mat code?

- a. OCOMMO
- b. OCMMNO
- c. OCMOMN
- d. OCMMON

88. In a certain code, DECEMBER is written as ERMBCEDE, which word will be written as ERMBVENO in that code?

- a. AUGUST
- b. SEPTEMBER
- c. OCTOBER
- d. NOVEMBER

89. The proportion of male students and the proportion of vegetarian students in a school are given below. The school has a total of 800 students, 80% of whom are in the secondary section and rest equally divided between class 1 and 12.

	Male (M)	Vegetarian (V)
Class 12	0.60	0.54
Class 11	0.55	0.50
Secondary section	0.275 (288)	0.55 (352)
Total	0.475	0.53

What is the percentage of vegetarian students in class 12?

- a. 40
- b. 45
- c. 50
- d. 55

90. Choose the number which is DIFFERENT from the rest?

- a. 64
- b. 27
- c. 8
- d. 45

91. Pointing to an old man, Ram said, "His son is my son's uncle." How is the old man related to Ram?

- a. brother
- b. uncle
- c. brother in law
- d. father

92. Six plays A, B, C, D, E and F are staged on six days of the week starting from Monday to Saturday. Play C is staged on Tuesday. Plays A, F and B are staged one after other in the same order. Play D is not staged on Monday or Wednesday. Which play is staged on Thursday?

- a. E
- b. F
- c. D
- d. B

93. Nine friends L, M, N, O, P, Q, R, S and T are sitting around a circle facing the centre. T sits 5<sup>th</sup> to the right of R. N is not an immediate neighbor of either R or T. M sits between S and P. N sits 4<sup>th</sup> to the left of P. O sits 2<sup>nd</sup> to the right of Q. S is not an immediate neighbor of T. Who is the immediate left of L?

- a. T
- b. P
- c. M
- d. None of the above

Read the following passage and answer questions 94 and 95.

Amongst five friends, each got a different percentage of marks in the examination. Anika scored more than Alka but less than Anjali. Anjali scored 70% marks. Anamika scored less marks than only Anshika. The one who scored the minimum marks scored 65% marks and the one who scored the highest, scored 87% marks.

94. Who is the most likely to have scored 82% marks?

- a. Alka
- b. Anika
- c. Anamika
- d. Anshika

95. Who scored the second lowest mark?

- a. Alka
- b. Anshika
- c. Anamika
- d. Anika

96. Find the missing series

2, 6, 12, 20, 30, 42, 56, \_\_\_\_\_

- a. 61
- b. 64
- c. 72
- d. 70

Read the situation and answer 97 and 98.

Six players K, M, G, D, L and T are sitting in a circular table facing the center. M is to the left of K. D is between G and T. L is between G and M. And M is diagonally opposite to D.

97. How many people seated between L and T if counted clockwise?

- a. 2
- b. 3
- c. 4
- d. None of the above

98. Who sits between L and D?

- a. T
- b. G
- c. M
- d. Either T or M

99. Varun starts running from point A and runs 15 km towards south. He takes a left turn and runs 20 km. Now he runs 9 km after taking a right turn. He finally takes a right turn and runs 20 km and stops at point B. How far is point B with respect to point A?

- a. 24 km
- b. 40 km
- c. 45 km
- d. 28 km

100. Z, U, Q, ?

- a. I
- b. K
- c. M
- d. N